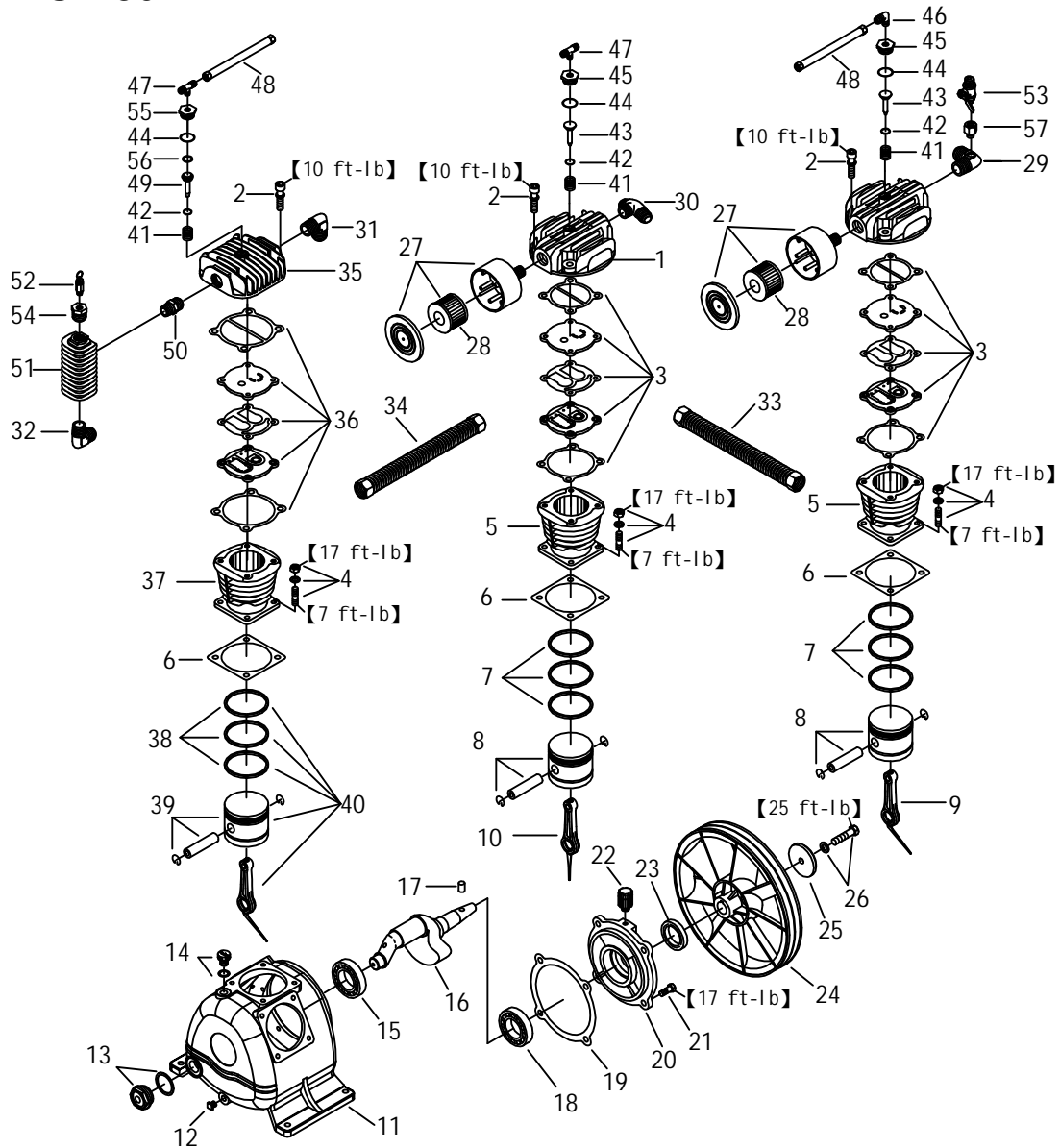


MODEL : TUE-50



SPARE PARTS LIST

NO : MF-1707

REF. NO.	DESCRIPTION	PART NO.	QTY.	REF. NO.	DESCRIPTION	PART NO.	QTY.
1	Cylinder head	3101055	2	30	Exhaust 3-way pipe	2N09-04H04T04H2	1
2	Allen bolt set	3B01-M06*040V	12	31	Exhaust elbow	2N06-04T04H	1
3	In. & Ex. valve assembly	3B13-AC0765C	2	32	Exhaust elbow	2N06-06T04H	1
4	Double head screw	3B11-001-A	12	33	Exhaust tube set	3B2-04*195	1
5	Cylinder	3201035	2	34	Exhaust tube set	3B2-04*400	1
6	Cylinder gasket	2G04-003	3	35	Cylinder head	3101022	1
7	Piston ring set	3B32-65N	2	36	In. & Ex. valve assembly	3B13-AC0751C	1
8	Piston set	3B31-65N	2	37	Cylinder	3201039	1
9	Rod set	3B33-H2048	1	38	Piston ring set	3B32-51	1
10	Rod set	3B33-H2037	1	39	Piston set	3B31-TK2351	1
11	Crankcase	3301140	1	40	Piston & rod assembly	3B3-TK23	1
12	Oil draining plug	2N33-002	1	41	Unloading spring	2S03-001	3
13	Oil sight gauge set	2303022B	1	42	O-ring	2N52-P06V	3
14	Oil filling plug set	2319003A	1	43	Unloading piston	2113006	2
15	Bearing	2N35-6205	1	44	O-ring	2N52-P16*3V	3
16	Crankshaft & balancer	3304046	1	45	Unloading nut	2B26-001	2
17	Pulley key	2N47-63*09	1	46	Unloading elbow	2N06-01T02H	1
18	Bearing	2N35-6205Z	1	47	Unloading 3-way pipe	2N09-02H01T02H4	2
19	Bearing seat gasket	2G06-008	1	48	Unloading tube set	3B2-02*395N	2
20	Bearing seat	3311036	1	49	Unloading piston	2113016	1
21	Hexagon bolt	2B00-SM08*020	4	50	Nipple	2N01-04T04TS	1
22	Breathing cover	2321008	1	51	Spare tank	3125007	1
23	Oil seal	2N50-TC24*47*07	1	52	Pressure relief valve	2406020A	1
24	Pulley	3PBF-105A224	1	53	Ball valve	2413014	1
25	Plate washer	2B30-08*35*35	1	54	Bushing	2N02-002	1
26	Hexagon bolt set	3B00-SM08*035AV	1	55	Unloading nut	2B26-003	1
27	Air filter set	2140020A	2	56	O-ring	2N52-P09V	1
28	Filter element	2142013	2	57	Bushing	2N02-02T02TC	1
29	Exhaust elbow	2N06-04T04H02T	1				