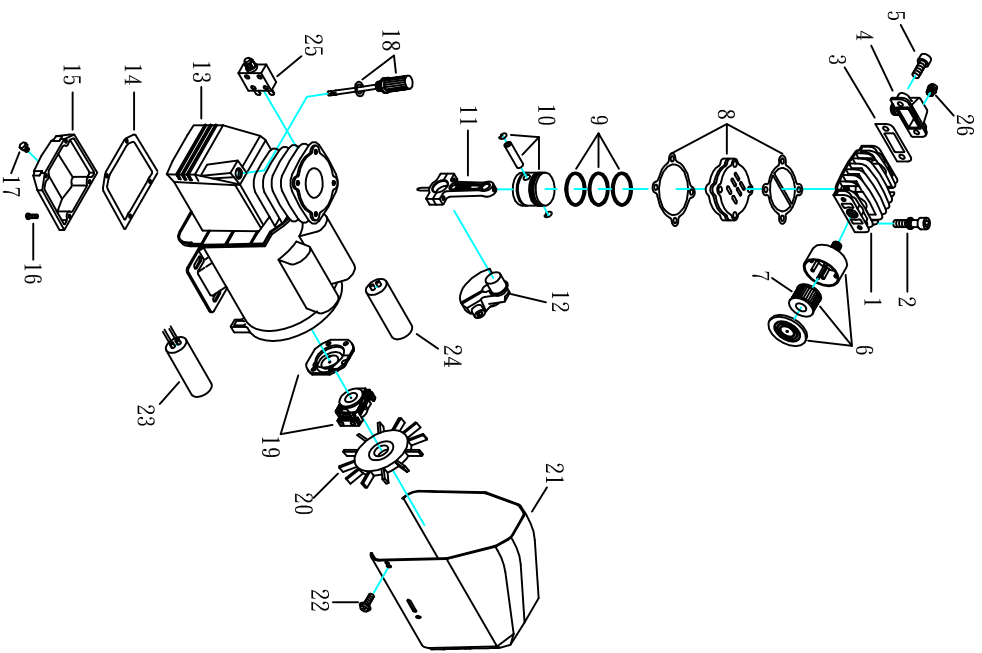


MODEL :DP-2004V (Pump)

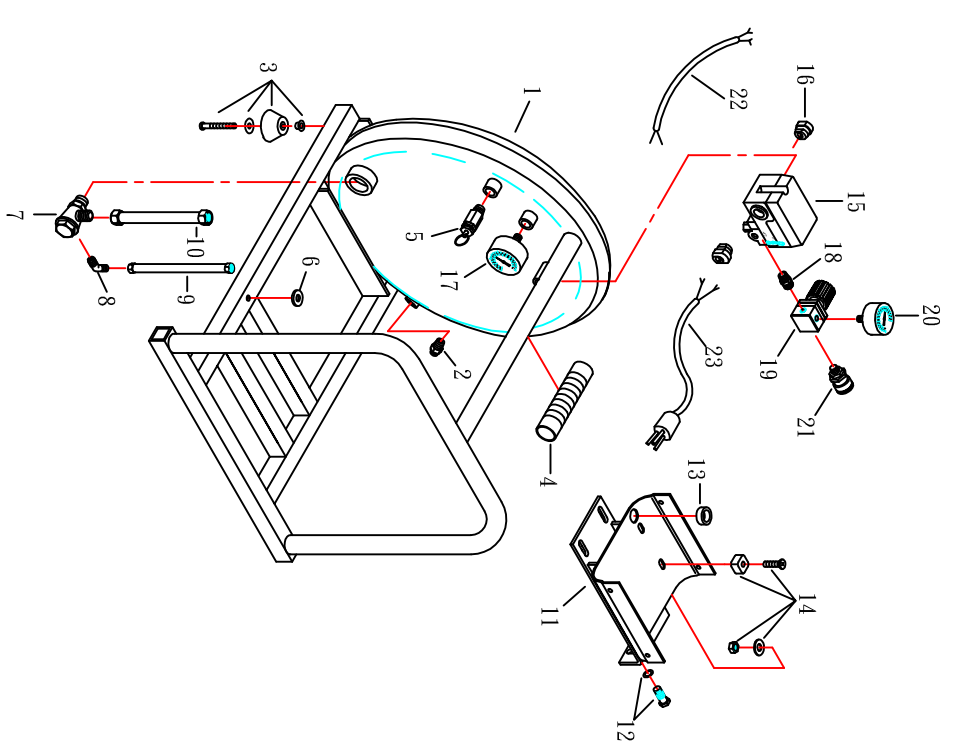


SPARE PARTS LIST

NO : MP-0803

REF. NO.	DESCRIPTION	PART NO.	QTY	REF. NO.	DESCRIPTION	PART NO.	QTY
1	Cylinder head	3101042	1	14	Crankcase base gasket	2608-001	1
2	Allen bolt set	2B01-006*035V	4	15	Crankcase base	3349001	1
3	Exhaust elbow gasket	2G09-001	1	16	Bolt	2B02-FM5*015	4
4	Exhaust elbow	2N06-04H11	1	17	011 draining plug	2N33-001	1
5	Allen bolt	2B01-008*020	2	18	Distric set	23390084	1
6	Air filter	2140019A	1	19	Centrifugal switch set	2E24-14062P	1
7	Filter element	2142013	1	20	Cooling fan	2336037	1
8	Inlet&Exhaust valve assembly	3B13-K5047	1	21	Shroud	2428003	1
9	Piston ring set	3B32-42	1	22	Bolt	2B02-FM5*010W	6
10	Piston set	3B31-42	1	23	Running capacitor	2E27-050F250V	1
11	Rod	2315032	1	24	Starting capacitor	2E28-300F125V	1
12	Crankshaft & balancer	3304076	1	25	Thermal protector	2E25-18A	1
13	Motor set	3B8-NA1602	1	26	Auto relief valve	2409003	1

MODEL :DP-2004V (Receive Tank)



SPARE PARTS LIST

NO : MP-0803

REF. NO.	DESCRIPTION	PART NO.	QTY	REF. NO.	DESCRIPTION	PART NO.	QTY
1	Air tank	3401023	1	13	Bushing	2E04-101	1
2	Drain valve	2405011	1	14	Motor feet set bolt	2B08-FM08*30A	4
3	Rubber pad set	2433011A	4	15	Pressure switch	2E21-0367B	1
4	Grip	2432102	1	16	Strain relief bushing	2E04-010	1
5	Pressure relief valve	2406018T	1	17	Pressure gauge	2D12-200D14KS	2
6	Body seat block	2439008	6	18	Nipple	2N01-058	1
7	Check valve	2414025T	1	19	Regulator	2408008LWX	1
8	Unloading elbow	2N06-01T02H	1	20	Pressure gauge	2D12-150D15KS	1
9	Unloading tube	3B2-02*260T	1	21	Quick coupler	07MS01/4M-B	1
10	Exhaust soft tube	2702-04*0250	1	22	Cable	2E02-203060212T	1
11	Tank seating	3401024	1	23	Power cable	2E01-012	1
12	Hexagon bolt set	2B00-FM08*020V	4				