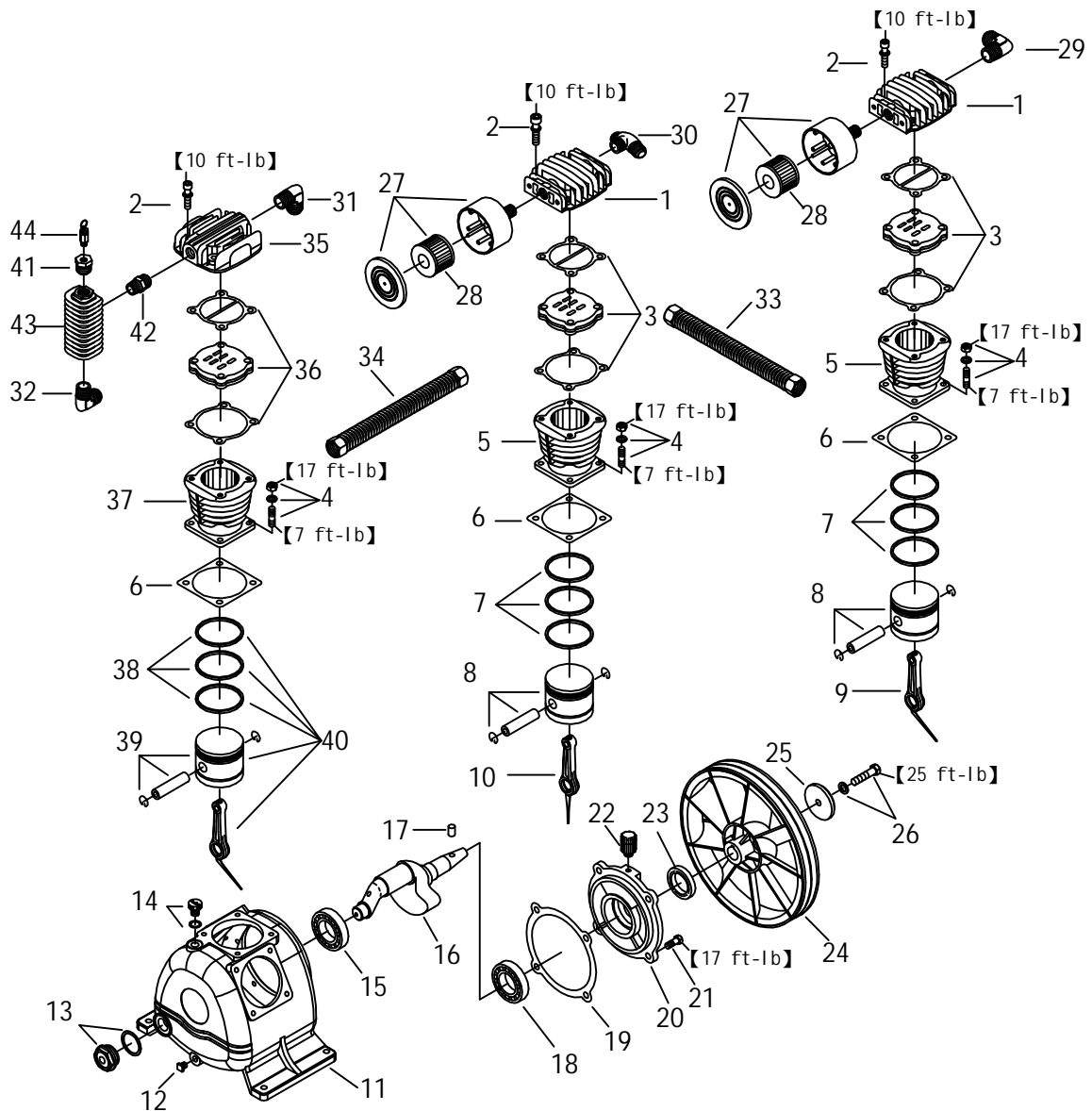


# MODEL : TE-50



## SPARE PARTS LIST

NO : MF-1707

| REF. NO. | DESCRIPTION              | PART NO.      | QTY. | REF. NO. | DESCRIPTION              | PART NO.        | QTY. |
|----------|--------------------------|---------------|------|----------|--------------------------|-----------------|------|
| 1        | Cylinder head            | 3101047       | 2    | 23       | Oil seal                 | 2N50-TC24*47*07 | 1    |
| 2        | Allen bolt set           | 3B01-M06*040V | 12   | 24       | Pulley                   | 3PBF-105A224    | 1    |
| 3        | In. & Ex. valve assembly | 3B13-K5065C   | 2    | 25       | Plate washer             | 2B30-08*35*35   | 1    |
| 4        | Double head screw        | 3B11-001-A    | 12   | 26       | Hexagon bolt set         | 3B00-SM08*035AV | 1    |
| 5        | Cylinder                 | 3201035       | 2    | 27       | Air filter set           | 2140020A        | 2    |
| 6        | Cylinder gasket          | 2G04-003      | 3    | 28       | Filter element           | 2142013         | 2    |
| 7        | Piston ring set          | 3B32-65N      | 2    | 29       | Exhaust elbow            | 2N06-04T04HSS   | 1    |
| 8        | Piston set               | 3B31-65N      | 2    | 30       | Exhaust 3-way pipe       | 2N09-04H04T04H2 | 1    |
| 9        | Rod set                  | 3B33-H2048    | 1    | 31       | Exhaust elbow            | 2N06-04T04H     | 1    |
| 10       | Rod set                  | 3B33-H2037    | 1    | 32       | Exhaust elbow            | 2N06-06T04H     | 1    |
| 11       | Crankcase                | 3301140       | 1    | 33       | Exhaust tube set         | 3B2-04*195      | 1    |
| 12       | Oil draining plug        | 2N33-002      | 1    | 34       | Exhaust tube set         | 3B2-04*400      | 1    |
| 13       | Oil sight gauge set      | 2303022B      | 1    | 35       | Cylinder head            | 3101052         | 1    |
| 14       | Oil filling plug set     | 2319003A      | 1    | 36       | In. & Ex. valve assembly | 3B13-K5051C     | 1    |
| 15       | Bearing                  | 2N35-6205     | 1    | 37       | Cylinder                 | 3201039         | 1    |
| 16       | Crankshaft & balancer    | 3304046       | 1    | 38       | Piston ring set          | 3B32-51         | 1    |
| 17       | Pulley key               | 2N47-63*09    | 1    | 39       | Piston set               | 3B31-TK2351     | 1    |
| 18       | Bearing                  | 2N35-6205Z    | 1    | 40       | Piston & rod assembly    | 3B3-TK23        | 1    |
| 19       | Bearing seat gasket      | 2G06-008      | 1    | 41       | Bushing                  | 2N02-002        | 1    |
| 20       | Bearing seat             | 3311036       | 1    | 42       | Nipple                   | 2N01-04T04TS    | 1    |
| 21       | Hexagon bolt             | 2B00-SM08*020 | 4    | 43       | Spare tank               | 3125007         | 1    |
| 22       | Breathing cover          | 2321008       | 1    | 44       | Pressure relief valve    | 2406020A        | 1    |