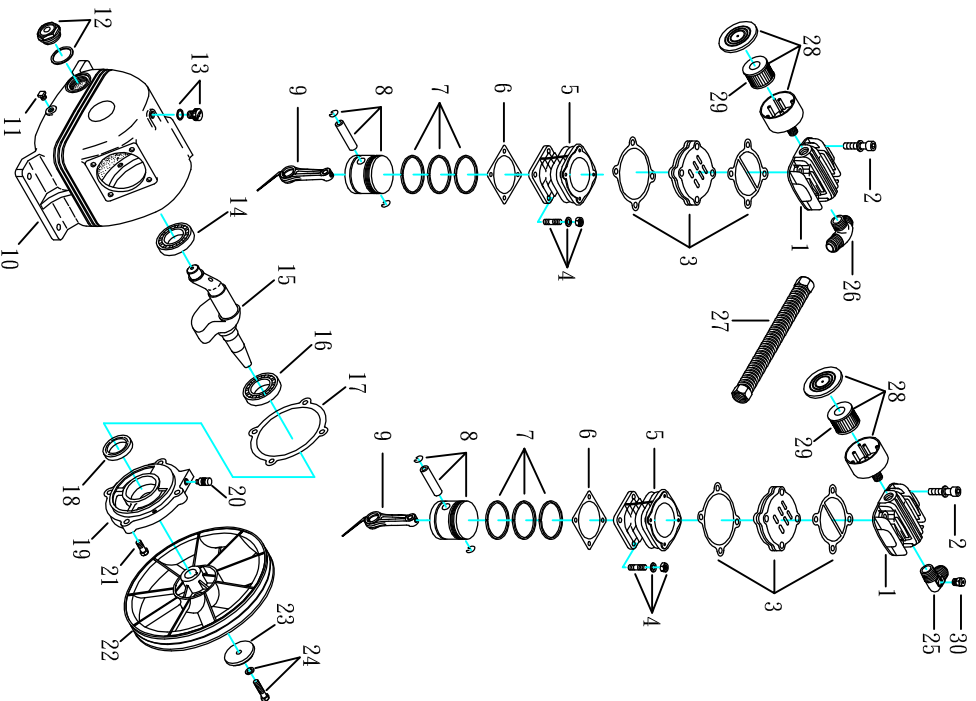


MODEL : PK-5020 (Pump)

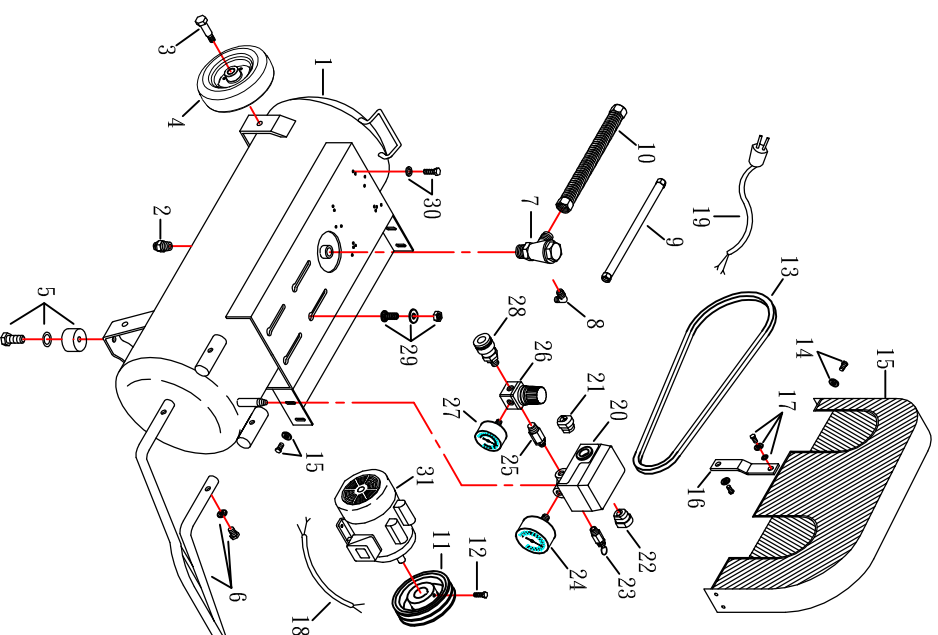


SPARE PARTS LIST

NO : MP-0805

REF. NO.	DESCRIPTION	PART NO.	QTY	REF. NO.	DESCRIPTION	PART NO.	QTY
1	Cylinder head	3101052	2	16	Bearing	2N35-6205Z	1
2	Allen bolt set	2801-4M06*40V	8	17	Rear bearing seat gasket	2G06-008	1
3	In. & Ex. valve assembly	3B13-45051	2	18	O11 seal	2N50-TC24*47*07	1
4	Double head screw set	2B11-001-A	8	19	Rear bearing seat	3311015	1
5	Cylinder	3201036	2	20	Breathing cover	2321002	1
6	Cylinder gasket	2G04-002	2	21	Hexagon bolt	2B00-SM08*020	4
7	Piston ring set	3B32-51	2	22	Plate washer	3PBF-105A124	1
8	Piston set	3B33-H1048	2	23	Hexagon bolt set	2B30-08*35*35	1
9	Rod set	3B33-H1048	2	24	Exhaust elbow	2B00-SM08*035AV	1
10	Crankcase	3301014	1	25	Exhaust three way pipe	2N06-04T04H02T	1
11	O11 draining plug	2N33-001	1	26	Exhaust tube set	2N09-04I04T04H1	1
12	O11 slight gauge set	2303014A	1	27	Air filler set	3B2-04*225	1
13	O11 filling plug set	2319003A	1	28	Filter element	2140019A	2
14	Bearing	2N35-6204	1	29	Auto relief valve	2142013	2
15	Crankshaft & balancer	3304038	1	30		2409012	1

MODEL : PK-5020 (Receiver Tank)



SPARE PARTS LIST

NO : MP-0805

REF. NO.	DESCRIPTION	PART NO.	QTY	REF. NO.	DESCRIPTION	PART NO.	QTY
1	Air tank	3401482	1	17	Hexagon bolt set	2B00-SM06*020WV	1
2	Drain valve	2405011	1	18	Cable	2E02-2030422V2T	1
3	Tank wheel bolt	2418005	2	19	Power cable	2E01-012W	1
4	Rubber pad set	2402028B	2	20	Pressure switch	2E21-036T	1
5	Grip set	2433015A	2	21	Strain relief bushing	2E04-012	1
6	Check valve	3432013-A	1	22	Pressure relief valve	2E04-009	1
7	Unloading tube	2414025T	1	23	Pressure gauge	2406018T	1
8	Unloading tube set	2N06-01T02H	1	24	Regulator	2D12-20D14KS	1
9	Motor pulley	3B2-02*620T	1	25	Pressure gauge	2N01-045	1
10	V-belt	3B2-04*440	1	26	Quick coupler	2408008NV	1
11	Allen bolt	2N06-035A1W0515	1	27	Motor feet set bolt	2D12-15D15KS	1
12	Hexagon bolt set	2B01-A08*020	2	28	Hexagon bolt set	07NS01/4M-B	1
13	Hexagon bolt set	2N31-A46	1	29	Hexagon bolt set	2B08-PM08*20-B	4
14	Hexagon bolt set	2B00-PM08*015W	5	30	Motor	2B00-PM08*025V	4
15	Belt guard	3425007A	1	31	Motor	2M02-A7426	1
16	Bracket	3427043	1				