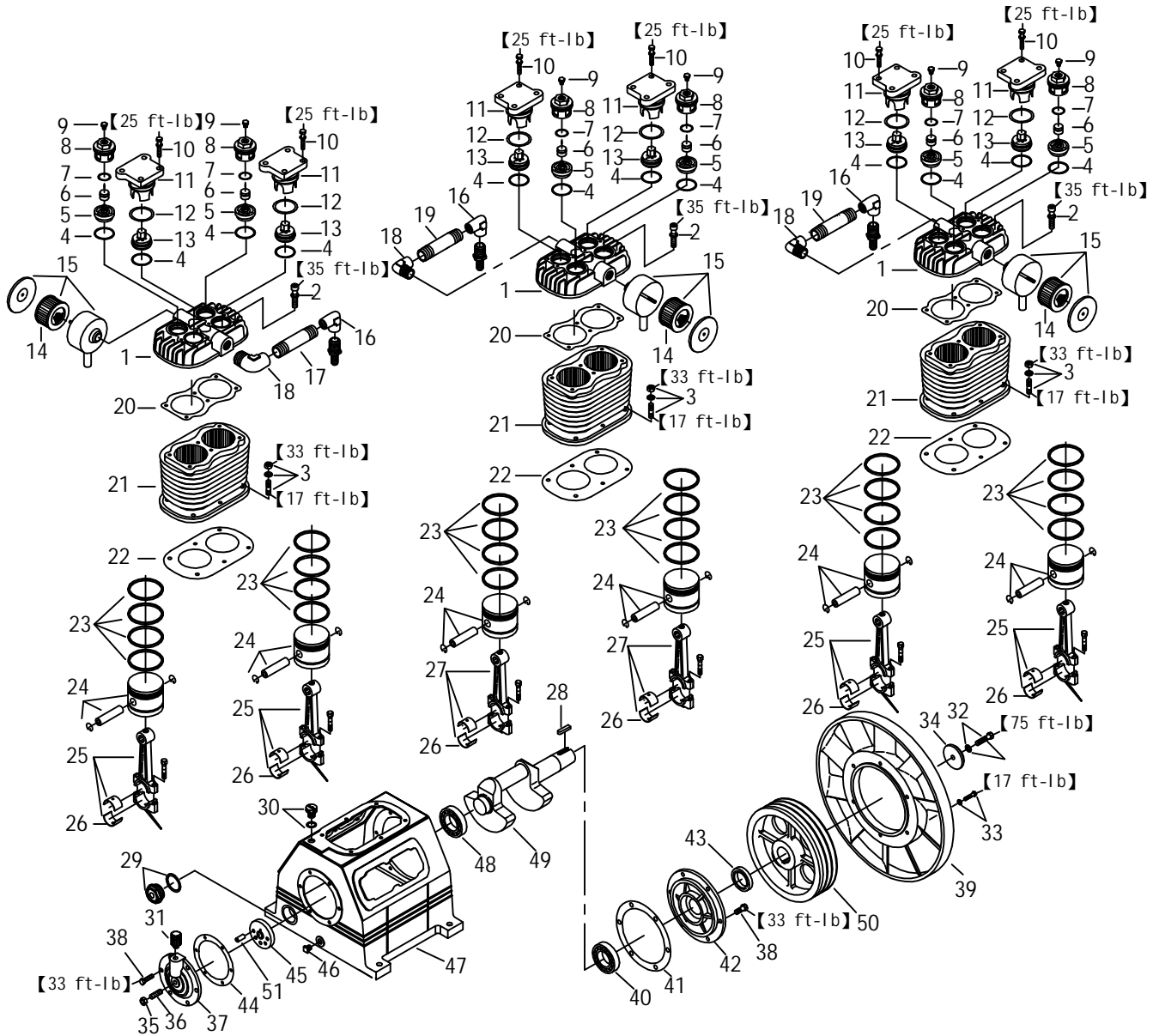


MODEL :HL200



SPARE PARTS LIST

NO : MF-1707

REF. NO.	DESCRIPTION	PART NO.	QTY.	REF. NO.	DESCRIPTION	PART NO.	QTY.
1	Cylinder head	3101053	3	26	Rod bush(2 pieces)	2316008-B	6
2	Allen bolt set	3B01-M10*045V	18	27	Rod set	3B33-HL150B	2
3	Double head bolt set	3B11-003-A	18	28	Pulley key	2N47-10*8*40	1
4	Inlet/Exhaust washer	2B31-002	12	29	Oil sight gauge set	2303024B	1
5	Inlet valve assembly	3B12-PU75	6	30	Oil filling plug set	2319004A	1
6	Unloading piston	2113010	6	31	Breathing cover	2321008	1
7	O-ring	2N52-P21V	6	32	Hexagon bolt set	3B00-SM12*050V	1
8	Inlet valve holder	3110010	6	33	Hexagon bolt set	3B00-SM08*035AV	6
9	Plug	2B14-ST01E	6	34	Pulley washer	2B34-13*95*12	1
10	Hexagon bolt set	2B00-SM08*030V	24	35	Hex nut	2B24-101	1
11	Exhaust press plate	3126005	6	36	Bolt	2B07-SM16*40	1
12	O-Ring	2N52-G55V	6	37	Front bearing seat	3309012	1
13	Exhaust valve assembly	3B11-HL75	6	38	Hexagon bolt	2B00-SM10*025	12
14	Filter element	2142009	3	39	Fly wheel	3PBF-630*280	1
15	Air filter	2140011	3	40	Bearing	2N35-32210	1
16	Exhaust elbow	2N07-10T10T	3	41	Rear bearing seat gasket	2G06-015	1
17	Nipple	2N01-047	1	42	Rear bearing seat	3311024	1
18	Exhaust elbow	2N08-10T10TES	3	43	Oil seal	2N50-TC50*72*12	1
19	Nipple	2N01-048	2	44	Front bearing seat gasket	2G05-009	1
20	Cylinder head gasket	2G01-019C	3	45	Thrust block	3312007-A	1
21	Cylinder	3201043	3	46	Oil draining plug	2N33-003	1
22	Cylinder gasket	2G04-016	3	47	Crankcase	3301073	1
23	Piston ring set	3B32-100	6	48	Bearing	2N35-32209	1
24	Piston set	3B31-100L	6	49	Crankshaft & balancer	3304057-A	1
25	Rod set	3B33-HL150	4	50	Pulley	3PBF-138B450	1