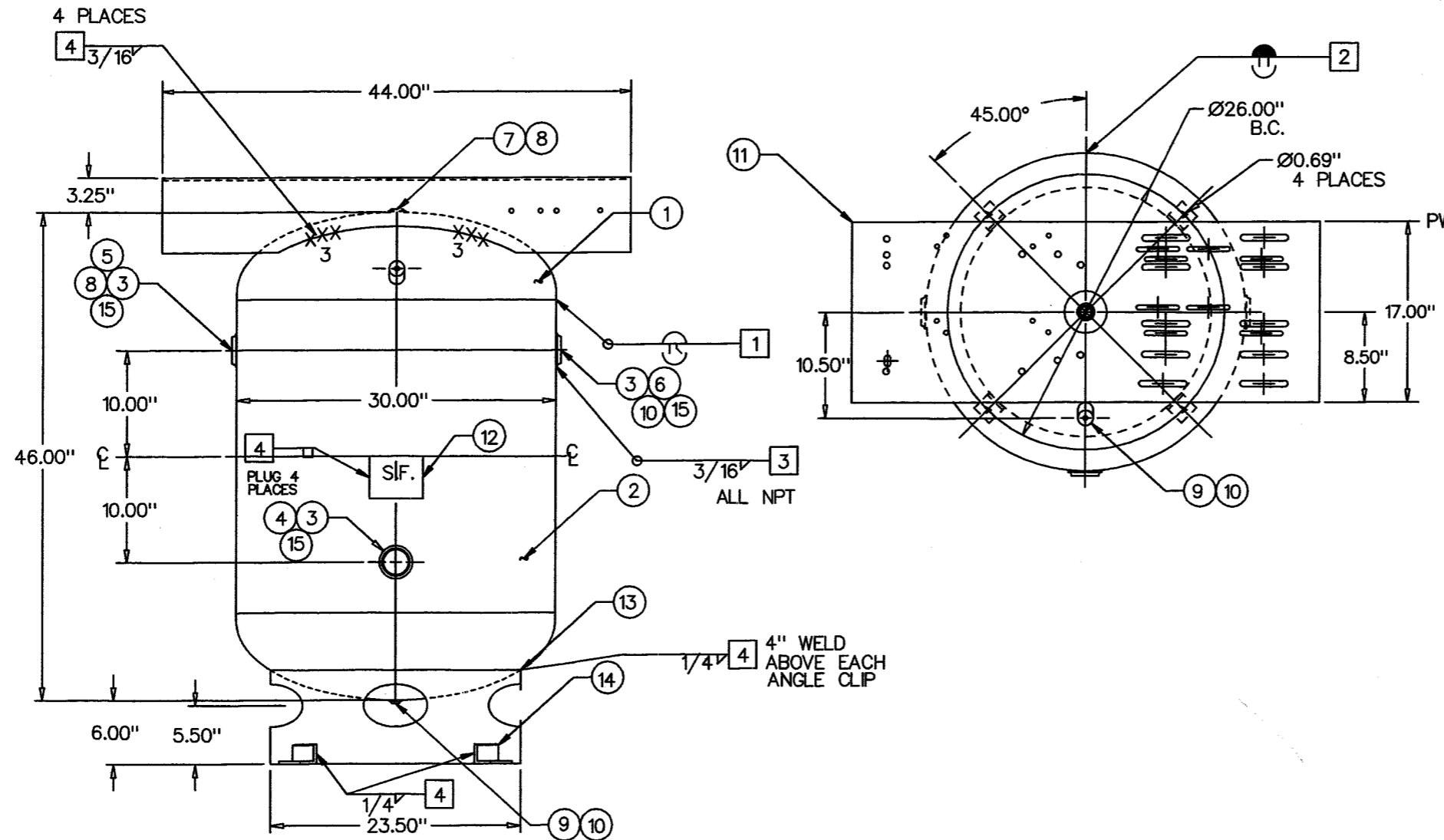


#2 .227 X 29-1/2" X 93-3/4"
 #13 3/16" X 60 X 78" (7 TO 1)



ITEM	P/N	DESCRIPTION	QTY
1	H30186J	30'OD 2:1 SE JOGGLE HEAD	2
2	R100013	.227 ROLLED SHELL	1
3	F102001	2" RAD. O-RING NPT	3
4	F402000	2" CAST IRON PLUG	1
5	F720075S	2" X 3/4" O-RING RED	1
6	F720025S	2" X 1/4" REDUCER	1
7	F100750	3/4" SERIES 384 NPT	1
8	F500750	3/4" PLASTIC PLUG	2
9	F100250	1/4" SERIES 381 NPT	2
10	F500250	1/4" PLASTIC PLUG	3
11	S101963	4 GA TOP PLATE	1
12	S100001	NAME PLATE	1
13	S100164	3/16" BASE RING	1
14	R400001	1/4" X 2" X 2" 2" LG	4
15	F720RING	2" O-RING	3

DESIGN & CALCULATIONS COMPLY WITH
 ASME CODE SECTION VIII, DIV. 1.
 20... EDITION
 ... ADDENDA

WPS	NDE
1 SFI-1 SK 1	MAGNETIC PARTICLE
2 SFI-1 SK 2	SPOT X-RAY PER UW52
3 SFI-2-1	FULL X-RAY PER UW51
4 SEE ATTACHMENT	SEAL WELDING REQUIRED

AIR COMPRESSORS PLUS INC.
 120V200
 ENG. APPL./DATE: *[Signature]* 3/30/05
 QCM APPL./DATE: *[Signature]* 3/30/05

ATTACHMENT WPS
 3/16 & BELOW A569 SFI-6
 5/16 & ABOVE A36 SFI-2-1
 STRUCTURAL A36 SFI-2-1
 1/4 A635 SFI-3

30" X 48" VERTICAL - AIR RECEIVER (120 GALLONS)

NO.	DATE	REVISION	ENG	QCM	HEAD THK: .186 MIN. C.A.: NONE MATL SA414-G EFF 85%
1	11/14/02	PRIMER WAS POWDER PAINT			SHELL THK: .227 NOM. C.A.: NONE MATL SA455 EFF 70%
					NATL BD. YES
					STAMP: "U" STAMP
					CRN: C6406.1C
					REF: AIR COMPRESSORS
					MAWP 200 PSI AT 400 °F
					MDMT -20 °F AT 200 PSI
					TEST: HYDRO AT 260 PSI
					PNEU. AT 260 PSI

FITTINGS - SA181-70
 IMPACT TESTING NOT REQUIRED PER UG-20(f)

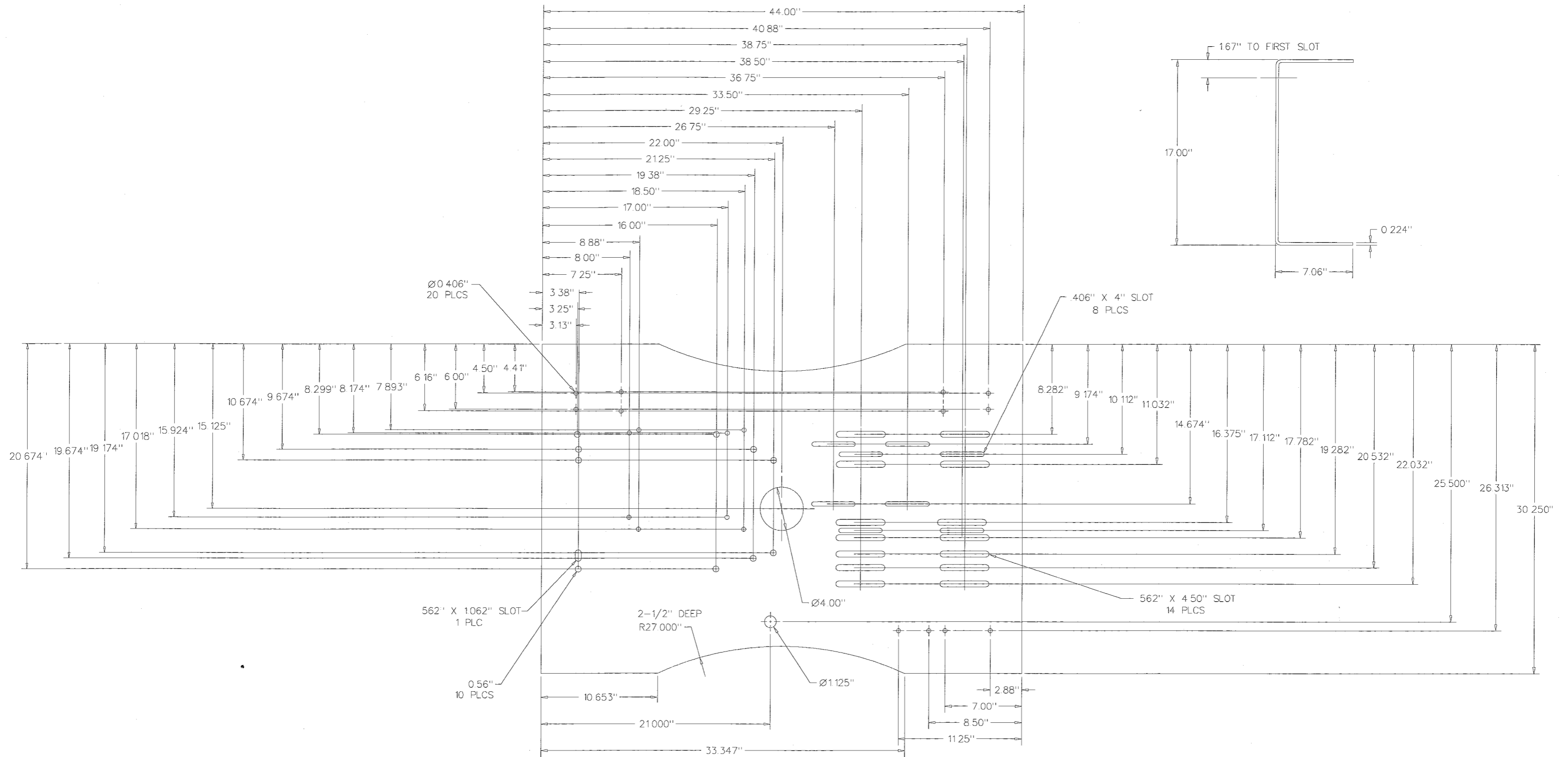
OAKVILLE, ONT. STEEL FAB ABINGDON, VA
 DRAWN BY: ABH P/N: A12272
 DATE: 09/25/02

SHIPPING WEIGHT: 240#

RELEASED TO PRODUCTION
 SALES ORDER NUMBER _____
 SPECIAL _____

S101963

REV.
3



4 GA X 30.25" X 44"

REV	DATE	DESCRIPTION	DRAWN BY	ABH	DATE	STEEL FAB INC.
1	10/10/02	NOTCH RADIUS			09/25/02	ABINGDON, VIRGINIA 24210
2	1/28/05	ADDED HOLES, MOVED SLOTS & HOLES		JE		DESC: 4 GA TOPPLATE FOR A12272 AIR COMPRESSORS PLUS INC.
3	2/10/05	ADDED SLOTS & HOLE			2/04/05	
						P/N: S101963

REV.
3